



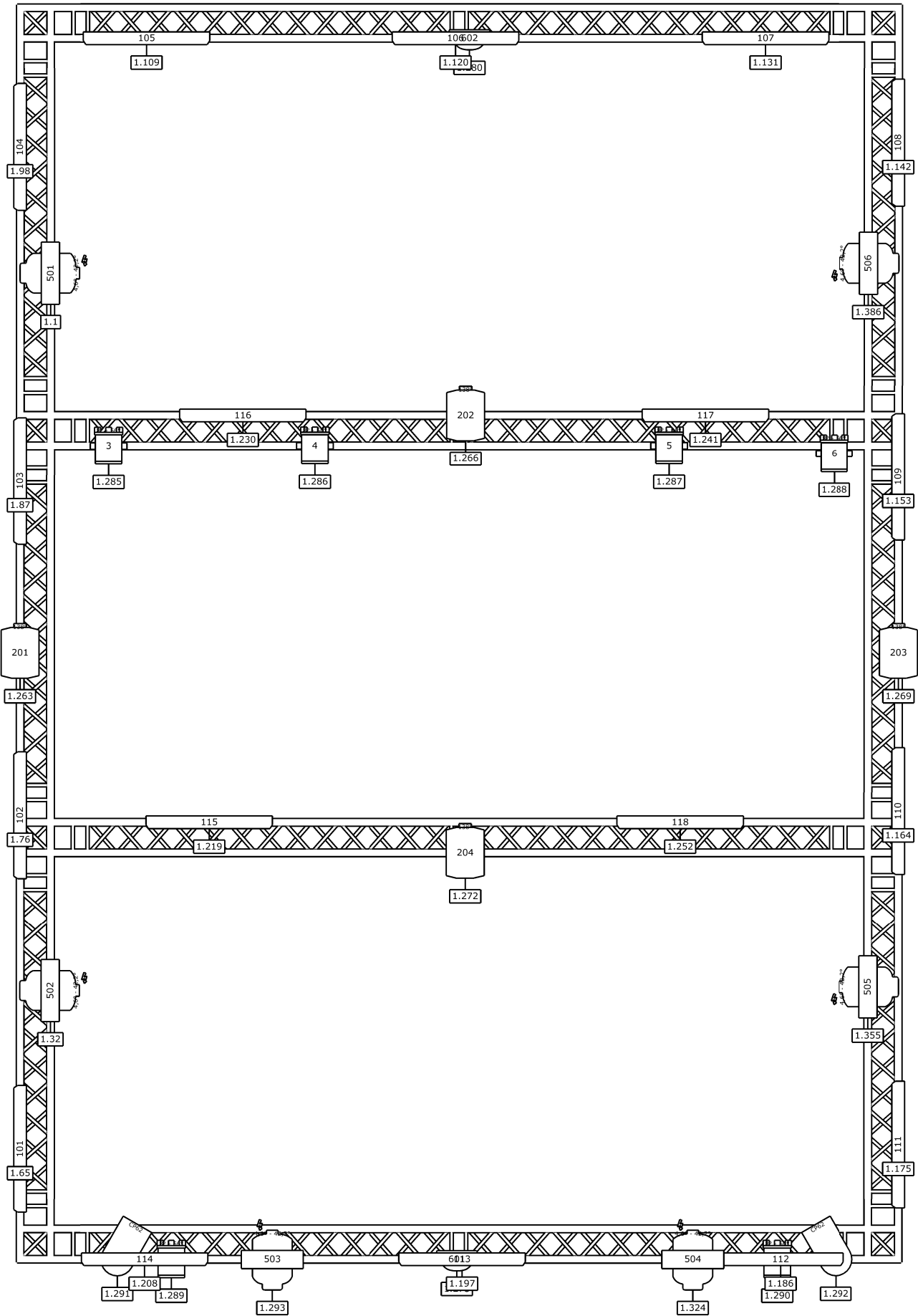
# Lichttechnik Geräte Report

16.09.2025 Volkshaus Lomnitz

## Geräte

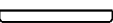





Geräte ID	Name	Patch	Modus	Gewicht	Leistungsaufnahme
1	Arri Arri Studio 1000	1.289	Control	7kg	1kW
2	Arri Arri Studio 1000	1.290	Control	7kg	1kW
3	Arri Arri Studio 1000	1.285	Control	7kg	1kW
4	Arri Arri Studio 1000	1.286	Control	7kg	1kW
5	Arri Arri Studio 1000	1.287	Control	7kg	1kW
6	Arri Arri Studio 1000	1.288	Control	7kg	1kW
7	Generic Par 64	1.291	Control	1,8kg	1kW
8	Generic Par 64	1.292	Control	1,8kg	1kW
101	ADJ Mega Bar LED	1.65	3	2,8kg	30W
102	ADJ Mega Bar LED	1.76	3	2,8kg	30W
103	ADJ Mega Bar LED	1.87	3	2,8kg	30W
104	ADJ Mega Bar LED	1.98	3	2,8kg	30W
105	ADJ Mega Bar LED	1.109	3	2,8kg	30W
106	ADJ Mega Bar LED	1.120	3	2,8kg	30W
107	ADJ Mega Bar LED	1.131	3	2,8kg	30W
108	ADJ Mega Bar LED	1.142	3	2,8kg	30W
109	ADJ Mega Bar LED	1.153	3	2,8kg	30W
110	ADJ Mega Bar LED	1.164	3	2,8kg	30W
111	ADJ Mega Bar LED	1.175	3	2,8kg	30W
112	ADJ Mega Bar LED	1.186	3	2,8kg	30W
113	ADJ Mega Bar LED	1.197	3	2,8kg	30W
114	ADJ Mega Bar LED	1.208	3	2,8kg	30W
115	ADJ Mega Bar LED	1.219	3	2,8kg	30W
116	ADJ Mega Bar LED	1.230	3	2,8kg	30W
117	ADJ Mega Bar LED	1.241	3	2,8kg	30W
118	ADJ Mega Bar LED	1.252	3	2,8kg	30W
201	ADJ Sunray Tri LED DMX	1.263	Standard	1,8kg	13W
202	ADJ Sunray Tri LED DMX	1.266	Standard	1,8kg	13W
203	ADJ Sunray Tri LED DMX	1.269	Standard	1,8kg	13W
204	ADJ Sunray Tri LED DMX	1.272	Standard	1,8kg	13W
501	Elation Fuze SFX	1.1	Standard	19,3kg	432W
502	Elation Fuze SFX	1.32	Standard	19,3kg	432W
503	Elation Fuze SFX	1.293	Standard	19,3kg	432W
504	Elation Fuze SFX	1.324	Standard	19,3kg	432W
505	Elation Fuze SFX	1.355	Standard	19,3kg	432W
506	Elation Fuze SFX	1.386	Standard	19,3kg	432W
601	Showtec RGB-Strobe 3000	1.275	Standard Mode	3kg 650g	3,0KW


602	Showtec RGB-Strobe 3000	1.280	Standard Mode	3kg 650g	3,0KW
				226,3kg	17kW 184W

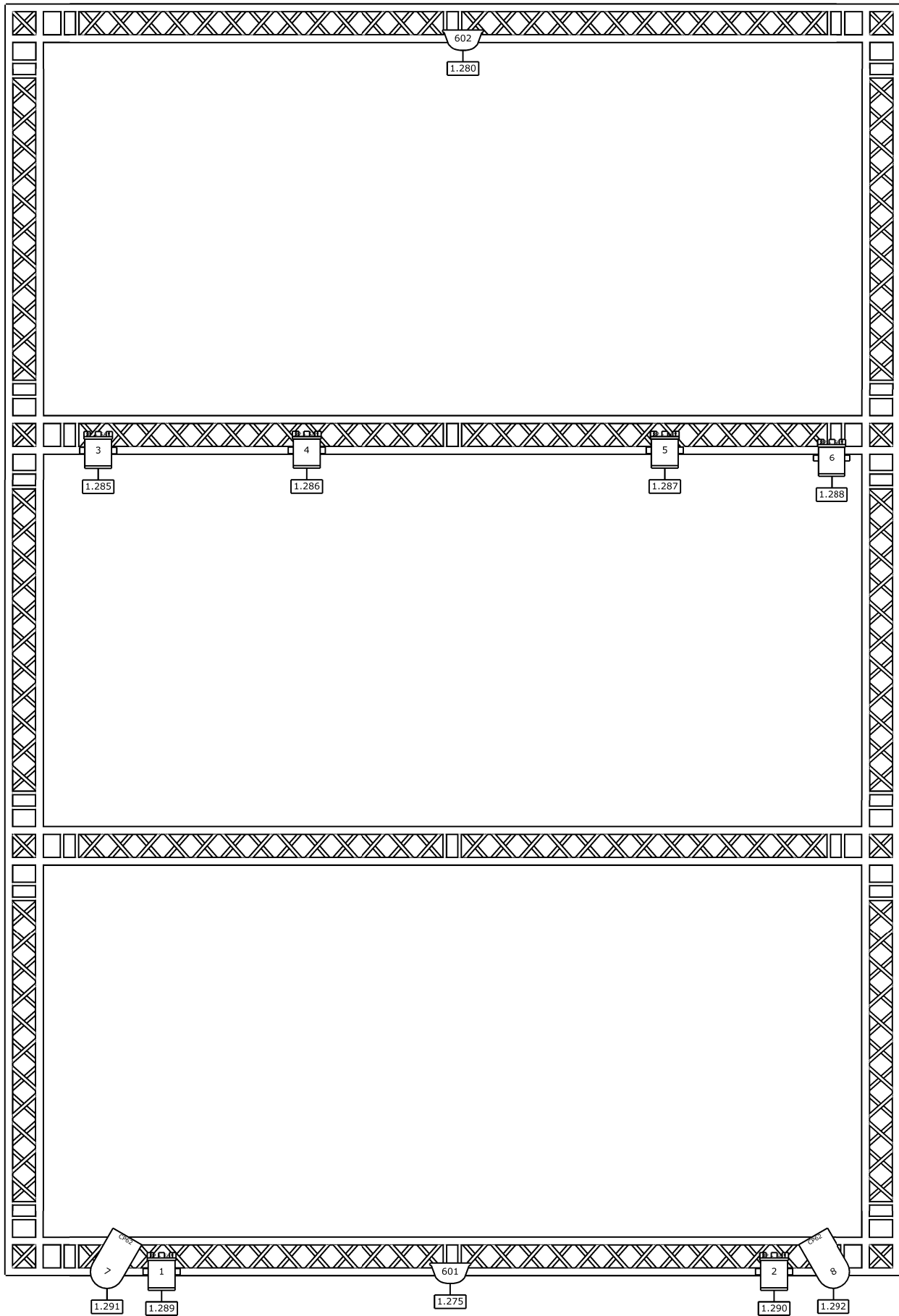


Projekt Name	Lichttechnik	Standort	Volkshheim Lomnitz	Datum	16.09.2025	Autor	JM-CVT	Version	Sep.2025
--------------	--------------	----------	--------------------	-------	------------	-------	--------	---------	----------

### Symbol Schlüssel


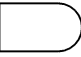
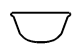
	Mega Bar LED (18)		Sunray Tri LED DMX (4)
	Arri Studio 1000 (6)		Par 64 (2)
	Fuze SFX (6)		RGB-Strobe 3000 (2)



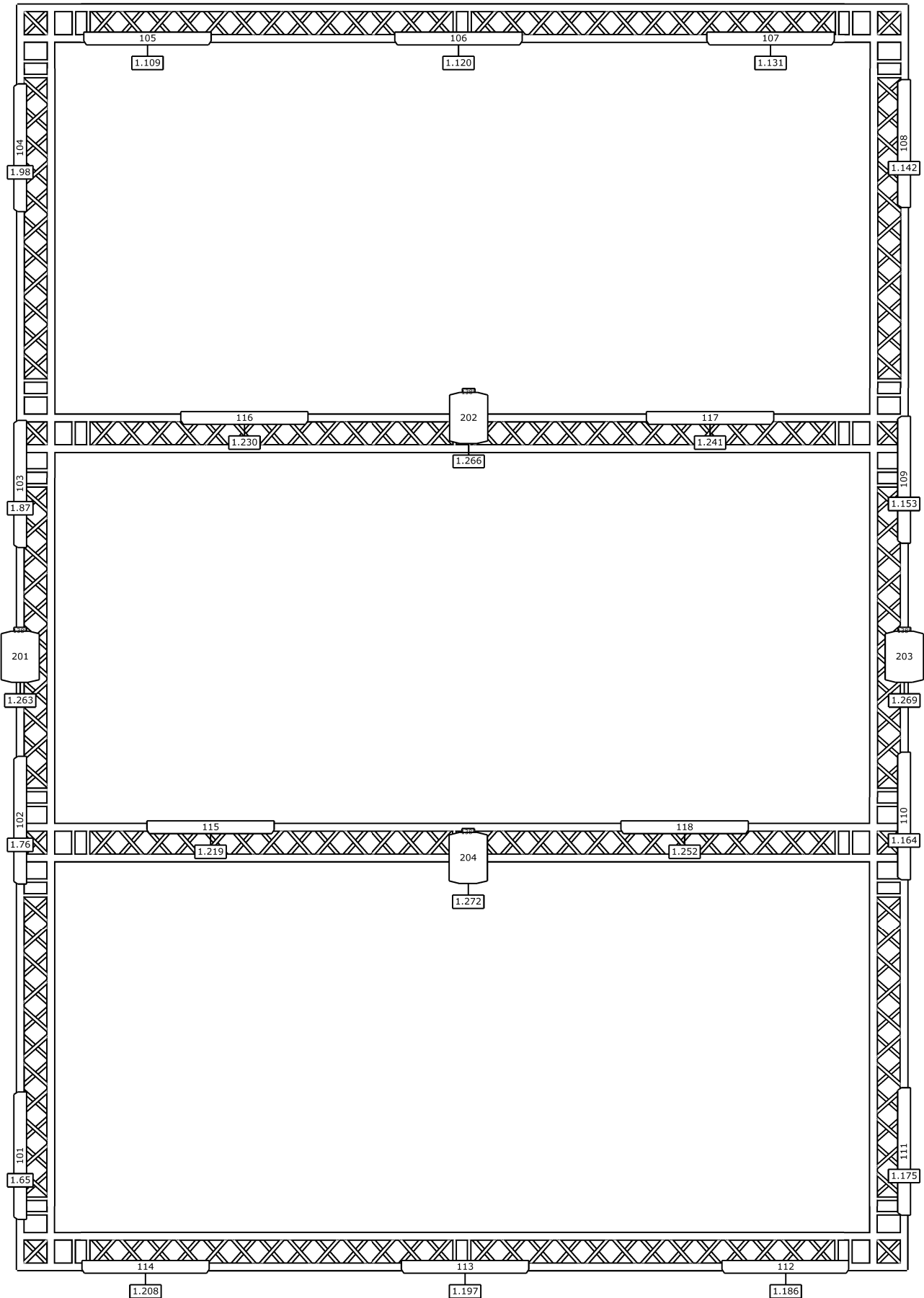


Projekt Name	Lichttechnik	Standort	Volkshheim Lomnitz	Datum	16.09.2025	Autor	JM-CVT	Version	Sep.2025
--------------	--------------	----------	--------------------	-------	------------	-------	--------	---------	----------

### Symbol Schlüssel



-  Arri Studio 1000 (6)
-  Par 64 (2)
-  RGB-Strobe 3000 (2)



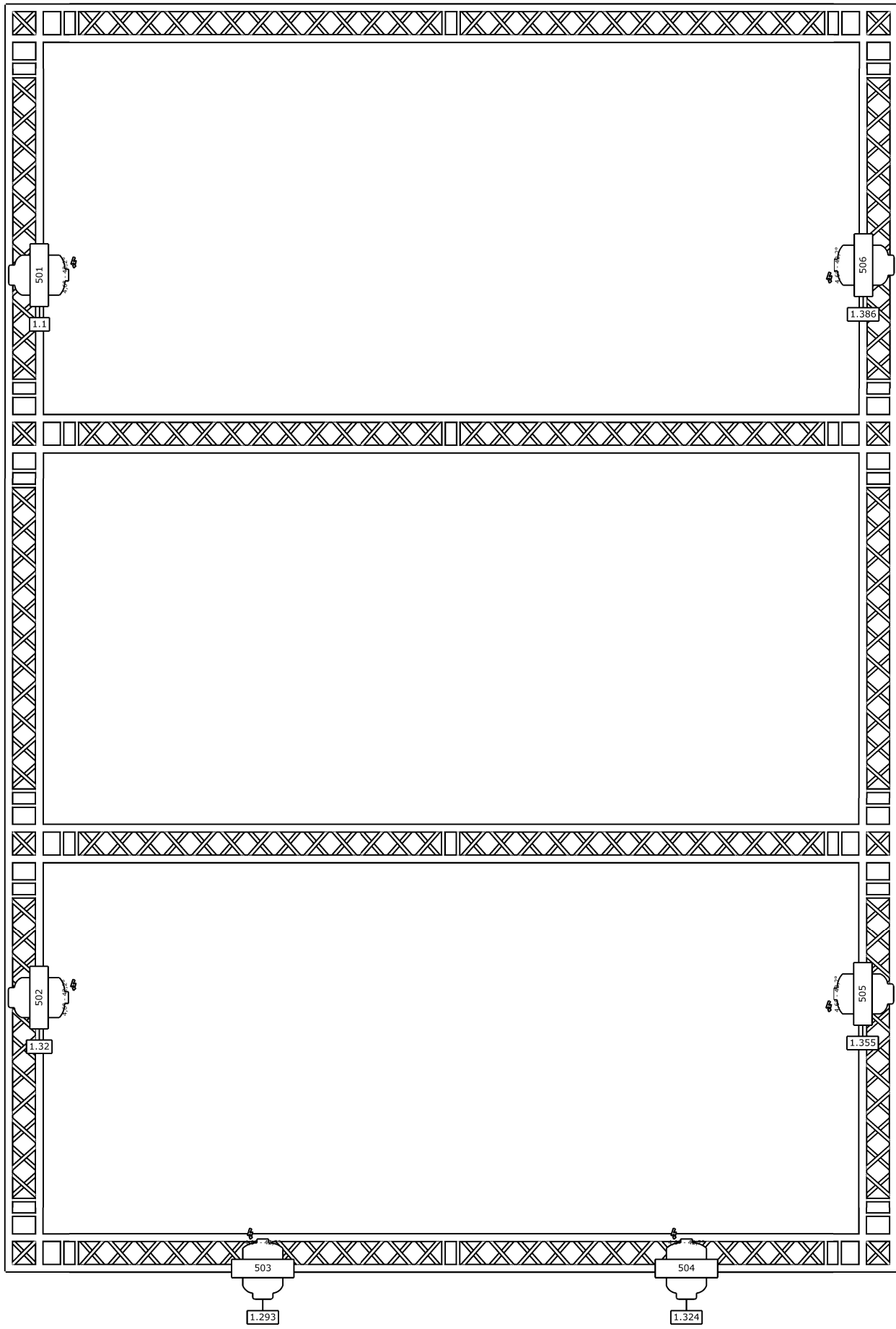


Projekt Name	Lichttechnik	Standort	Volkshheim Lomnitz	Datum	16.09.2025	Autor	JM-CVT	Version	Sep.2025
--------------	--------------	----------	--------------------	-------	------------	-------	--------	---------	----------

### Symbol Schlüssel

-  Mega Bar LED (18)
-  Sunray Tri LED DMX (4)





Projekt Name	Lichttechnik	Standort	Volkshheim Lomnitz	Datum	16.09.2025	Autor	JM-CVT	Version	Sep.2025
--------------	--------------	----------	--------------------	-------	------------	-------	--------	---------	----------

Symbol Schlüssel

 Fuze SFX (6)

